



Use of EGNOS in precision farming

EGNOS workshop

Rome, Italy

24-25 September, 2019

Contains confidential proprietary and trade secrets information of CNH Industrial. Any use of this work without express written consent is strictly prohibited.



CNH Industrial. The biggest company you've never heard of



CNH Industrial, part of the Exor Group, as is the Fiat Chrysler Group.



BASED IN ITALY

WORLD WIDE SCOPE

CNH INDUSTRIAL

Key Figures

One of the largest
capital goods companies
on the planet

5 GLOBAL SEGMENTS

AGRICULTURE

CONSTRUCTION

COMMERCIAL
& SPECIALTY VEHICLES

POWERTRAIN

FINANCIAL SERVICES

12



BRANDS

66



PLANTS

54



R&D CENTERS

\$1.1 BILLION



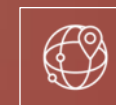
R&D SPENDING

64,625



EMPLOYEES

180



NATIONAL MARKETS

\$29.7 BILLION



CONSOLIDATED
REVENUES

Note: all figures provided in this presentation are on a US GAAP \$ basis and updated at December 31, 2018, unless otherwise indicated

OUR COMPANY: SEGMENTS AND KEY FEATURES

AGRICULTURE

Second largest manufacturer of agricultural machinery



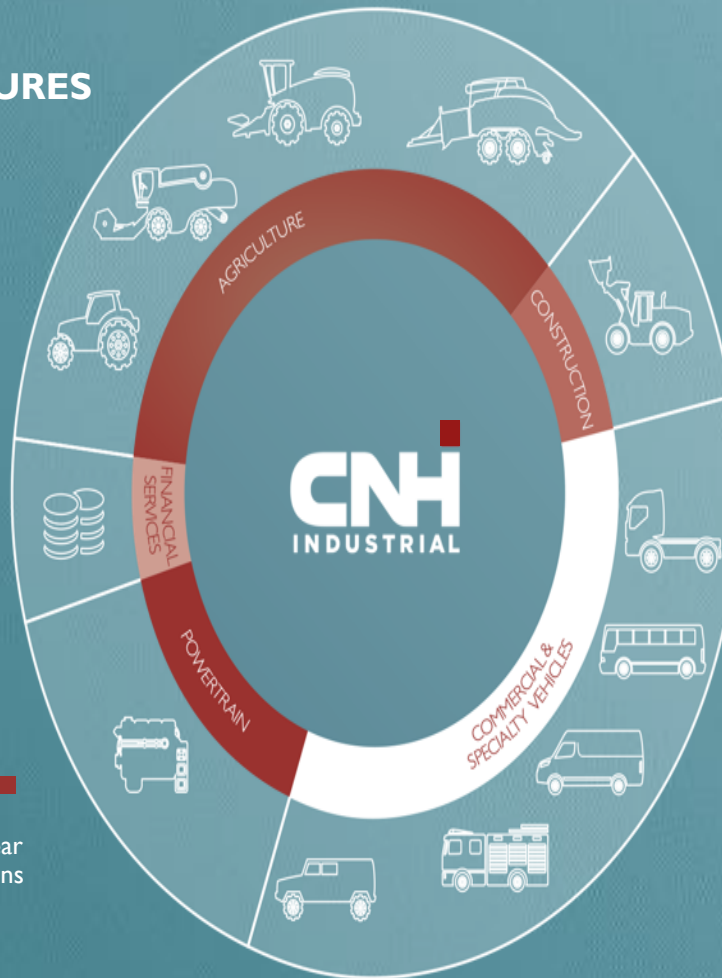
FINANCIAL SERVICES

A global leader in equipment finance, supporting customers and dealers with tailor made solutions



POWERTRAIN

Global number one in highly regulated markets, producing more than half a million engines a year and market leader in alternative fuels powertrains



CONSTRUCTION

A global player in the manufacturing of construction equipment



COMMERCIAL & SPECIALTY VEHICLES

Fifth largest manufacturer of commercial vehicles and the European market leader in natural gas commercial vehicles and buses



Entry level correction source?

- In the past, many adapters of precision farming started with EGNOS

- Easy to use
- No investments needed
- No subscription fee
- Accuracy was good enough for most applications



- Nowadays customer immediately choose the right correction signal for job

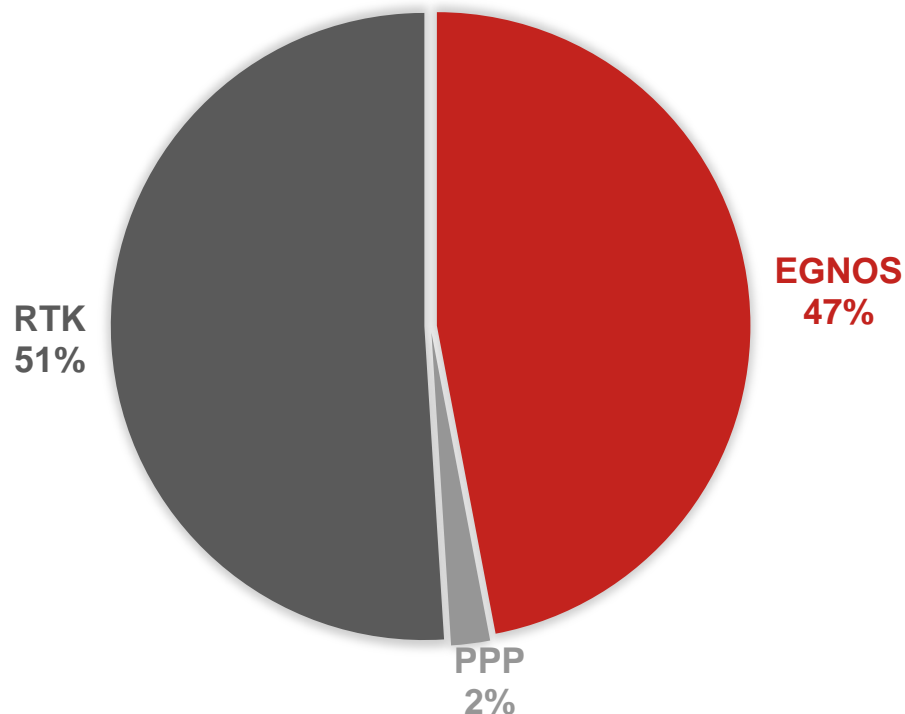
- SBAS where lower accuracy is acceptable
- PPP where high accuracy adds value
- RTK where high accuracy is mandatory



This cannot work with SBAS

EGNOS still has a high uptake rate

CORRECTION SOURCE USAGE IN EUROPE (CNHI CUSTOMERS)



320.000 CNHi PF
systems in the field
today

Of which
150.400 using EGNOS

Applications of EGNOS

Guided steering on harvesting machines

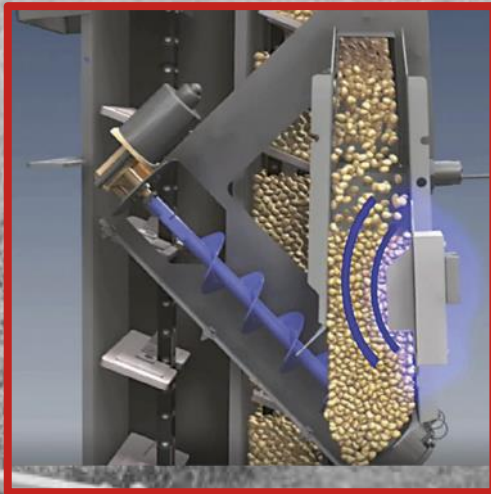


Crop sensing

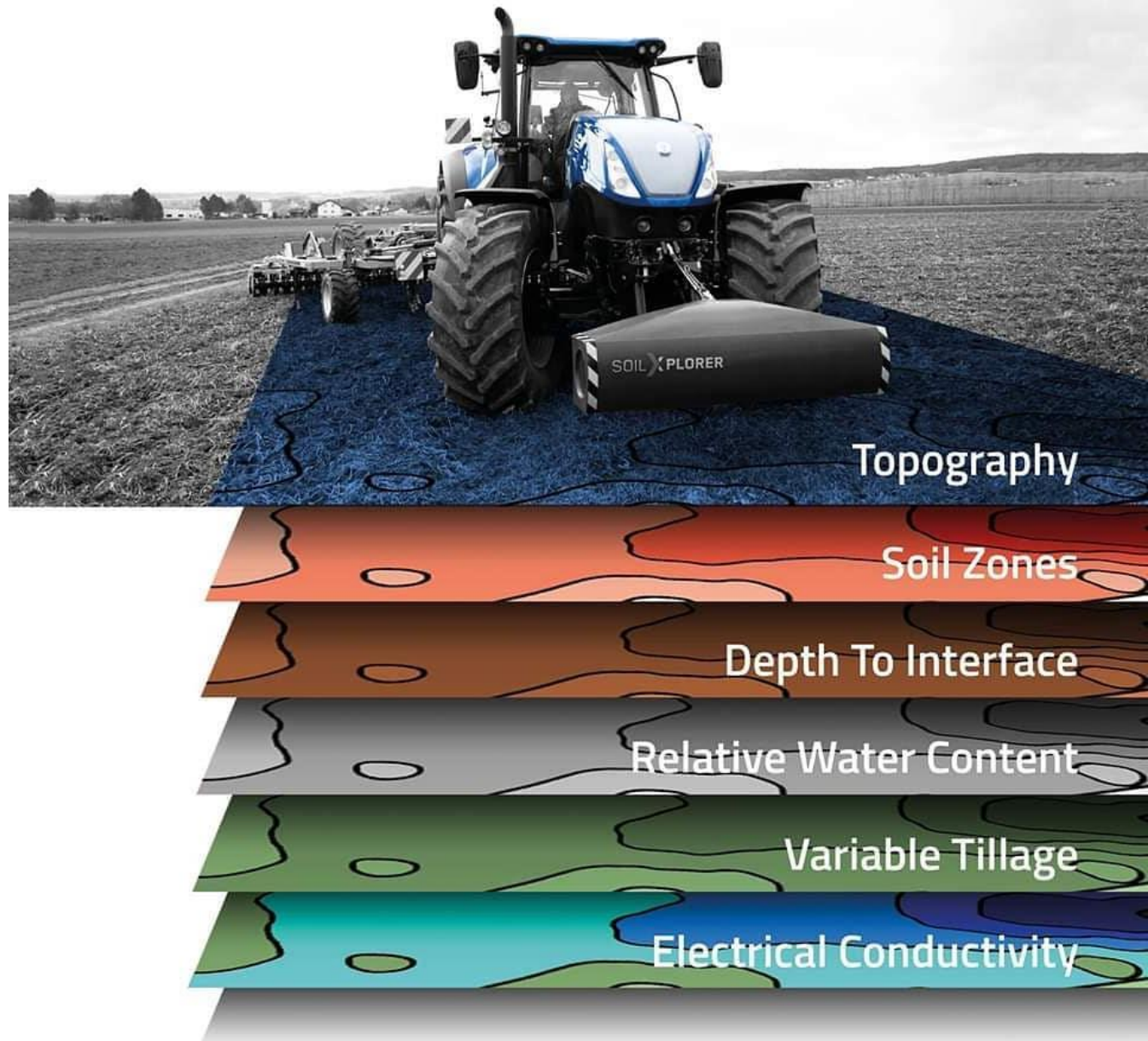
- Measuring and mapping of
 - Biomass Index
 - Nitrogen Index



Yield and moisture monitoring and mapping



Soil sensing

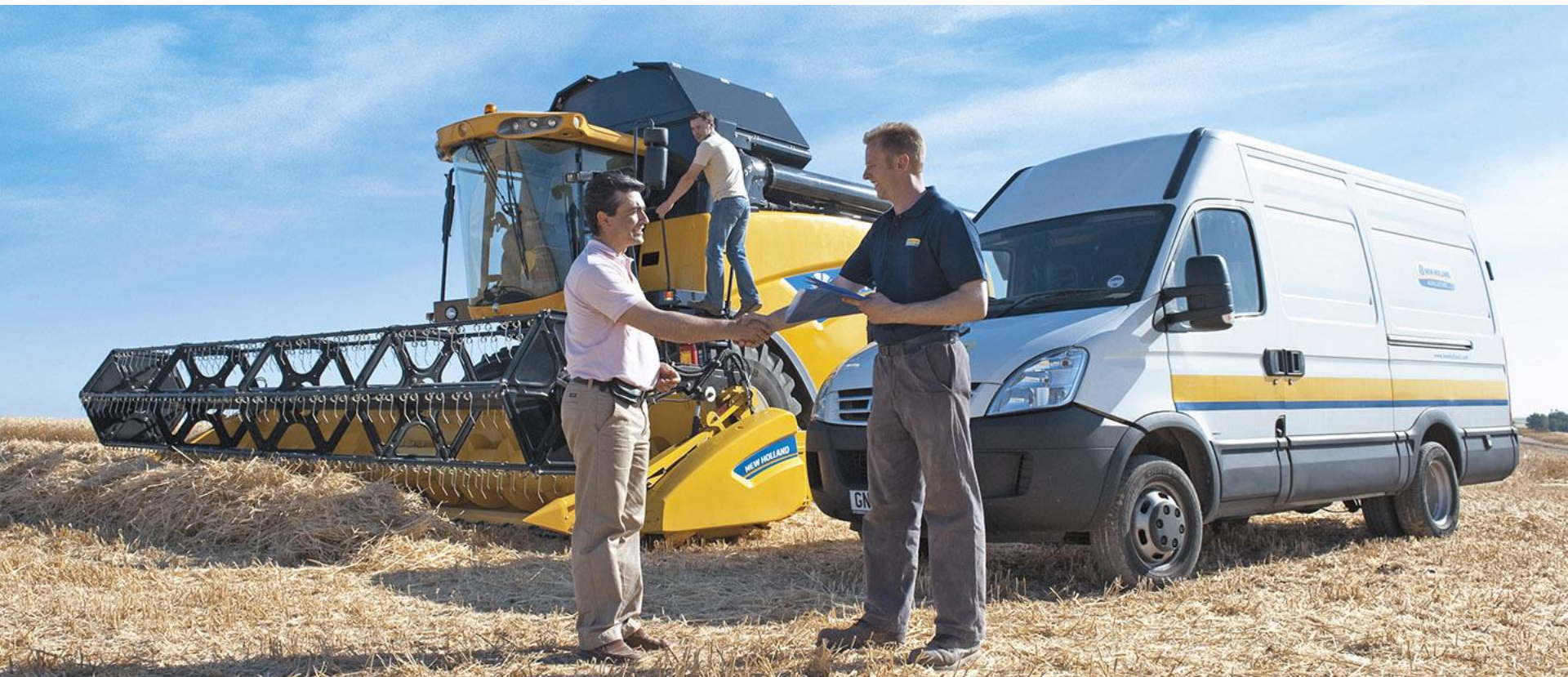


Rate and section control on sprayers and spreaders



EGNOS is a supported product

- Operators, customers and dealers can call the helpdesk for any questions regarding EGNOS and the use of it.



EGNOS – perception and challenges

- Our EGNOS users find the service to be:
 - + Reliable
 - + Indispensable for their field operations
 - + A valuable contribution in making their farming more productive and sustainable

- However:
 - Changes to the geostationary satellites cause troubles, despite all the efforts of bulletins and newsletters
 - EGNOS is not yet available in Ukraine (Kiev to be deployed as per EU 2017/1406). CNHi is really looking for the EGNOS version in which the station in Kiev is deployed because:
 - ✓ Ukraine is a priority partner for the European Union (EU) (source <https://eeas.europa.eu>)
 - ✓ Ukraine today possesses arable land area which equals to 30% of arable land of the European Union

Conclusion

Conclusion

- More than 150.000 CNHi customers are using EGNOS for their field activities and decision making.
- EGNOS is used for different applications today but there still are synergies to be exploited with remote sensing and earth observation.
- Awareness, training and funding on precision farming (in which positioning is a key) will contribute to a more sustainable and competitive European farming.

Therefore EU relevant stakeholders, from public institutions, industry and farmer associations should commit to achieve this goal.

Questions?